



Eva Table Base Assembly Instructions

Parts List

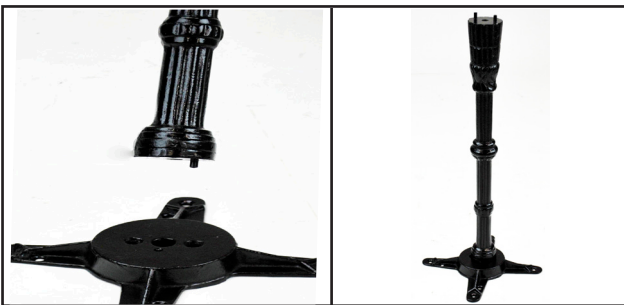
- (2) Bolts
- (1) Spider
- (1) Column
- (1) Base
- (3) Glides

Tools List

Adjustable
Wrench



1.



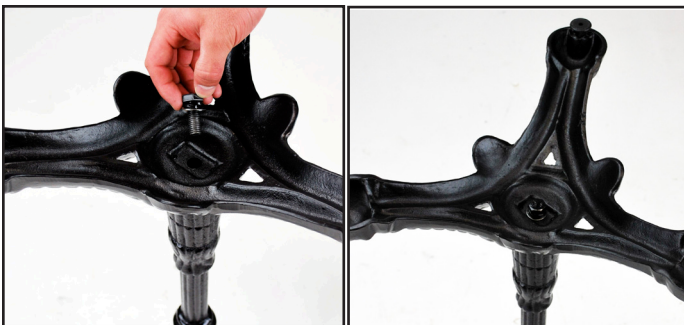
Place spider upside down on floor, then take column and insert into hole in spider.

2.



Flip based upside down and guide pegs in column into holes in base.

3.



Take bolt and screw through base into column. Use wrench to tighten completely.

4.



Flip base upright, then take bolt and screw it through spider into column. Use wrench to tighten completely.



1 800 4CHAIRS(424-2477)

www.garproducts.com

service@garproducts.com

Hours of Operation: 8:30am to 5:00pm EST

Tel 732.364.2100

Fax 732.370.5021

