



Clarisse Table Base Assembly Instructions

Parts List

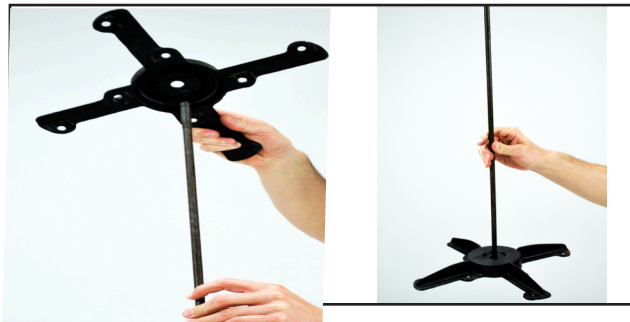
- (1) Rod
- (1) Nut
- (1) Spider
- (1) Column
- (1) Base
- (4) Glides

Tools List

- 7/16" Socket Wrench



1.



Slide rod through top of spider

2.



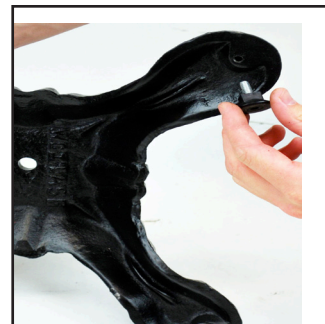
Flip spider and rod upside down, threaded end of rod should face up.

3.



Place column over rod

4.



Screw glides into bottom of base.



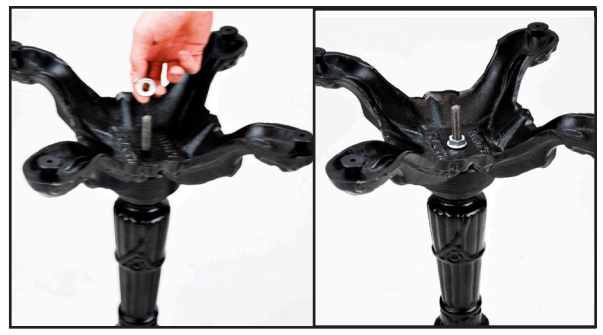
5.



Flip base upside down and guide rod through base's center hole

Step 4 Continued

6.



Connect base to column by tightening nut. Flip over for finished product

